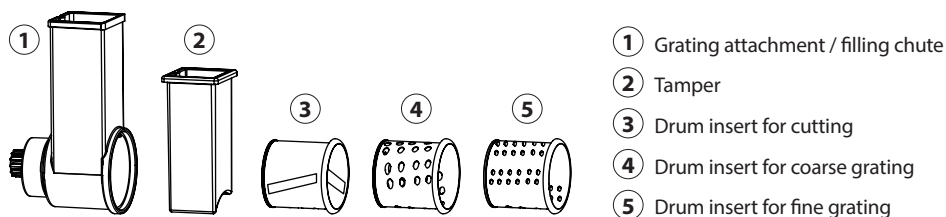


# Multi-grater attachment (3160) for KM 1800 Black

**COSO**  
DESIGN

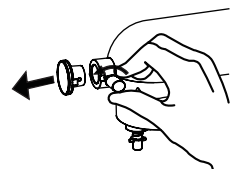


## Overview of the multi-grater

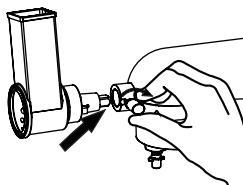
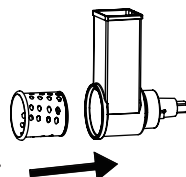


## Assembling the multi-grater

1. Undo the front cover screw and remove the cover of the accessory drive shaft.
2. Put on the grating attachment (1) and retighten the screw.



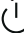


3. Place the desired drum insert (cut (3), coarse grate (4) or fine grate (5)) in the grating attachment.

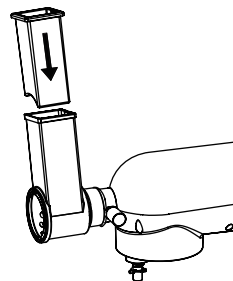


### Suitable foods:

fruit, vegetables, nuts,  
cheese, chocolate, etc.

## Using the multi-grater

1. Cut the desired ingredients into pieces that fit into the feed chute.
2. Check that the multi-grater is firmly attached to the motor head.
3. Put the ingredients into the feed chute of the grating attachment and place a container under the outlet of the multi-grater.
4. Plug the power plug into the outlet.
5. Tap the  button and select a speed level between 1-3.
6. Start the appliance by pressing the  button.
7. Carefully press the ingredients down with the tamper (2).
8. After use, switch off the appliance with the  button and pull the plug out of the outlet.



## After using the multi-grater

1. Undo the screw to remove the grater attachment and refit the drive shaft cover to the appliance.
2. Wash all components that have come into contact with food in hot

rinsing water. Clean all components immediately after use. The drum inserts and the tamper are dishwasher safe.



Before assembling/disassembling the multi-grater, unplug it from the power outlet.

If something is blocking the drum insert, first pull the plug from the power outlet and wait until the appliance has come to a complete stop. Then carefully try to remove the blockage.

Never reach into the filling shaft of the grater attachment; always use the tamper.

The drum inserts of the multi-grater are sharp; handle them carefully. Be careful when emptying or cleaning the inserts.