

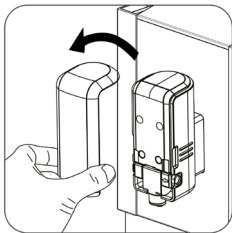
Cleaning the milk foam components of your Café Crema Touch

CASO[®]
DESIGN

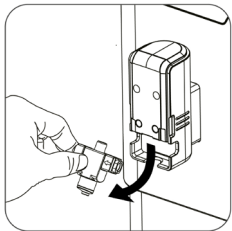
For the longest possible service life of your CASO Fully Automatic Coffee Machine and for the quality of your hot drinks, you should clean the components for producing milk foam regularly (daily or after use).

Proceed as follows:

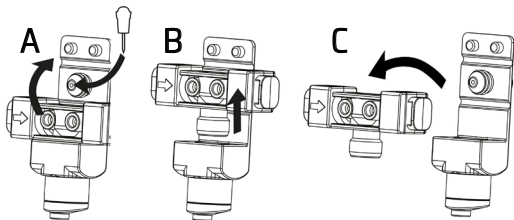
1. Remove the cover



2. Remove the milk spoud



3. Fold the rubber lining of the milk outlet upwards, as shown in the drawing (see below). Remove the milk outlet connector. Clean all the parts thoroughly under running water.



4. Use the push pin supplied with the machine to clean the hole in the milk outlet (Fig . A).

5. Re-assemble the milk outlet and insert it into the machine.

6. Fill the milk tank with water and use the milk frothing function twice.